

## WIRELESS BROADBAND FROM GNCI

### The Customer

...A regional California Bank with central loan processing operations headquartered in Sacramento. This loan processing center supports all of the bank's loan underwriting, packing and secondary market processing. Furthermore, this unit supports the bank's construction and real estate lending programs. Their regional lending center is a high-tech processing and servicing unit capable of delivering large volumes of loans for their own portfolio and for sale in the secondary market.

### The Challenge

This company's challenge was to build a secure wireless broadband solution capable of handling high volumes of data in the event of a critical loss of communications due to a failure of their wired lines or a natural disaster.



**Global Net Commerce, Inc.**

Secure In Wireless \* Solid In Solutions

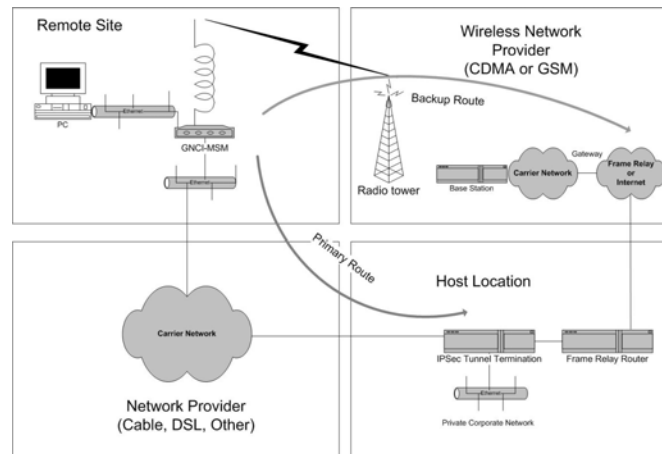
TEL: 949-515-1960

## CASE STUDY FOR WIRELESS BROADBAND BACK-UP

### The Solution

The bank turned to GNCI's products and services. GNCI has a proven track record in delivering solutions for certified, secure financial/data transactions with Fortune 1000 companies. GNCI's extensive experience in specialized design/engineering with broadband wireless networks allowed the bank achieve their disaster recovery requirements. GNCI's MSM (Multi-Service-Modem/Router) and its comprehensive feature sets exceeded the bank's stringent security objectives.

Sample network topology for GNCI's MSM (Multiple-Service-Modem/Router) for broadband wireless backup:



### The Result

The bank has successfully deployed GNCI's MSM Wireless Broadband application as the primary data communications back-up for this mission critical loan processing center.

GNCI was able to respond to this firm's needs with network design expertise and client specific software that delivered a highly secure wireless back-up program. This application provides the customer the confidence that their loan processing center can operate and communicate confidential data easily in the event their wired lines fail. GNCI delivers secure, turn-key wireless programs at a reduced cost and offers a comprehensive package of wireless support services.

#### Benefits

- Significant cost savings versus leased landline
- Improved time-to-market with speedy deployments
- Versatile and flexible applications
- High security features / IPSEC / VPN client-server
- Easily upgradeable radio card PCMCIA / Cardbus slot for future broadband platforms

- *High Speed Wireless Communications*
- *High Security Networking Devices*
- *Versatile, Flexible Applications*
- *Cost Effective*

Global Net Commerce, Inc.  
2102 Business Center Drive, Suite 130  
Irvine, CA 92612  
Phone: 949-515-1960  
Email: info@globalnetcommerceinc.com

