

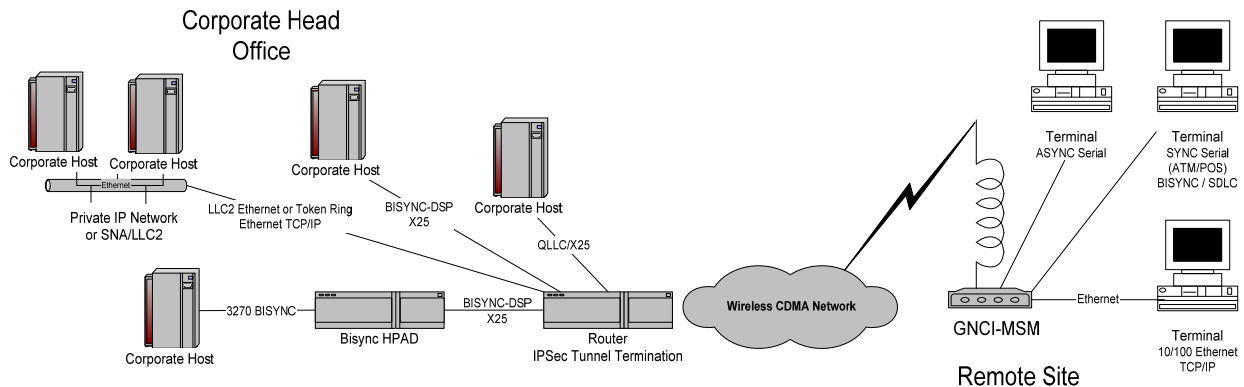
# Multi-Service Modem Wireless Router

## Product Data Sheet

### Overview

The GNCI Multi-Service-Modem (MSM) is a wireless router supporting WAN connections using CDMA networks (1xRTT, EVDO Rev.0 and Rev.A) and GSM networks (GPRS, EDGE, UMTS, HSDPA, HSUPA). The MSM supports primary communications over wireless, as well as backup to landline communications. The MSM is a full-featured router, compatible with all popular routing platforms and industry standard networking implementations.

The design of the MSM makes it easy for customers to connect their remote office locations, including retail and branch locations, to their corporate head office. In addition, the MSM has robust, reliable, and mature support for Automated Teller Machines and Point of Sale controllers, including the most widely used protocols for these applications.



### Applications

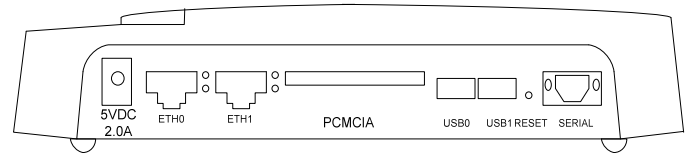
- Last Mile Connectivity
- Wireless Backup
- Automated Teller Machine and POS Controller
- Temporary Locations
- Emergency Circuit Relocation
- Mobile Office, Branch, Store
- Internet Access

### Benefits

- Significant cost savings versus landline
- Improved time to market with speedy deployments
- Versatile and flexible applications
- Improved security features
- Easily upgradeable radio card PCMCIA/Cardbus Slot
- High network availability

## Features and Specifications

- CDMA Radio Support
  - Audiovox / UTStarcom PC5750 (EVDO Rev.A)
  - Kyocera KPC650 (EVDO Rev.0)
  - Kyocera KPC680 (EVDO Rev.A)
  - Novatel V620, S620 (EVDO Rev.0)
  - Novatel V720, S720, 720USB (EVDO Rev.A)
  - Novatel V740, USB727 (EVDO Rev.A)
  - Pantech PX500 (EVDO Rev.A)
  - Sierra Wireless Aircard 550, 555 (1xRTT)
  - Sierra Wireless Aircard 580 (EVDO Rev.0)
  - Sierra Wireless / AirPrime PC5220 (EVDO Rev.0)
  - Sierra Wireless AC595 (EVDO Rev.A)
  - Sierra Wireless AC595-USB (EVDO Rev.A)
- GSM Radio Support
  - Sierra Wireless AC850, AC860 (UMTS)
  - Sierra Wireless AC875 (HSDPA)
  - Sierra Wireless AC881 (HSUPA & HSDPA)
  - Sony Ericsson GC75, GC75a (GPRS)
  - Sony Ericsson GC83 (EDGE)
- Firewall
  - NAT
  - PAT
  - Packet Filtering
- DHCP
  - Client
  - Server
  - DHCP Relay
  - DNS Proxy
- Network Protocols
  - TCP, UDP, ICMP
- Network Management
  - SSHv2
  - Telnet
  - HTTP
  - SNMP Traps
  - RSSI Alerts / Clear
  - Channel Changing
  - ECIO Status
  - CPE Connected / Disconnected
  - Mass Configuration Save / Restore
  - Mass Remote Firmware Upgrades
  - Radius Ready
- Interfaces
  - Two Independently Routed Ethernet Ports
  - 10/100 Autosense or configurable 10/100 Half/Full
  - Two USB 2.0 (can also be used for SYNC Serial [SDLC / BSC] with GNCI Adapter Cable)
  - One PCMCIA / Cardbus Slot
  - 10 LEDs
  - One Serial DB9M RS232 Async



Rear View MSM

- Routing
  - OSPF
  - BGPv4
  - RIPv2
- Pass-through Option
  - Full IP Bridging Support
  - DHCP Pass-through Support
  - Remote Management by Port Monitoring through HTTP, Telnet and SSH
- Tunnel / VPN Support
  - IPSec
  - IKE / ISAKMP
  - 3DES / AES
  - DPD (Dead Peer Detection)
  - GRE
- CPE Support
  - TCP/IP on 10/100 Full/Half Duplex
  - SDLC/QLLC
  - Will Deliver to host in SDLC, QLLC-X25, LLC2 on Token Ring or Ethernet
  - BSC 3270/3275
  - Full BSC to TCP Translation
- Networking Protocol Support
  - TCP/IP
  - SDLC/QLLC
  - BSC
  - BSC/DSP
  - BSC To TCP Full Translation
  - FTP
  - TFTP
  - SNMP
  - SYSLOG
  - NTP
  - HTTP
- Environmental
  - Operating Temp: 0 to 40 Celsius
  - Humidity: 0% to 95% non-condensing
- Physical
  - Length: 230mm
  - Width: 140mm
  - Weight without radio card: 200g